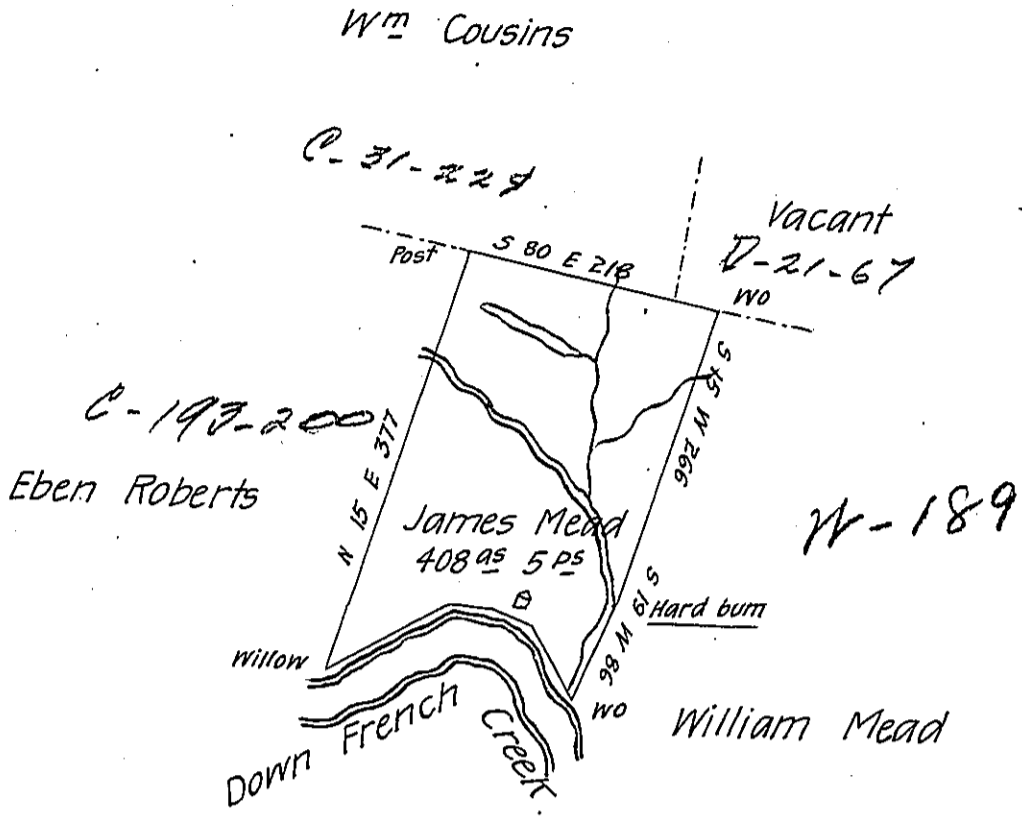


Courses and distances  
down French Creek  
from the wittow:

N 59 E 120  
N 88 1/2 E 41  
S 67 E 35  
S 33 E 72 W.O.  
268



The above is the draft of a tract of land in Sugar Creek Township Venango County, including the mouth of big Sugar creek adjoining Lands of William Mead Wm Cousins & Eben Roberts Surveyed May 17th 1803 in pursuance of a warrant granted to James Mead bearing date 17th March 1796.

Saml Dale D. S.

To Samuel Cochran Esq. S. G.

IN TESTIMONY that the above is a copy of the original remaining on file in the Department of Internal Affairs of Pennsylvania, made conformably to an Act of Assembly approved the 16th day of February, 1833, I have hereunto set my Hand and caused the Seal of said Department to be affixed at Harrisburg, this fourth day of May 1906.

*Joseph Brown*  
Secretary of Internal Affairs.